

By-Law Number xxxxxx

A By-Law to Establish Part 2 on Reference Plan 13R-19253 as Part of the Public Highway known as Wood's Side Road in the City of Kingston, in Accordance with Section 31(4) of the Municipal Act, Chapter 25, S.O. 2001

Passed: xxxxxxxx

Whereas Section 31, of the Municipal Act, Chapter 25, S.O. 2001, as amended, provides for the establishing and laying out of the lands as public highways;

Therefore be it resolved that the Council of The Corporation of the City of Kingston hereby enacts as follows:

1. That Part 2 on Reference Plan 13R-19253 be dedicated as Part of the Public Highway known as Wood's Side Road in the City of Kingston in accordance with Section 31, of the Municipal Act, Chapter 25, S.O. 2001, as amended.
2. This By-Law shall come into force and take effect when registered in the Land Registry Office by the Clerk of the Municipality.

Given all Three Readings and Passed:

Janet Jaynes
City Clerk

Bryan Paterson
Mayor

Location Map

Part 2, 13R-19253



I REQUIRE THIS PLAN TO BE DEPOSITED UNDER THE REGISTRY ACT

DATE: JUNE 18, 2008

Phil W. Chitty
PHIL W. CHITTY
ONTARIO LAND SURVEYOR

PLAN 13R-19253

RECEIVED AND DEPOSITED

DATE: June 19, 2008

Sandy Berckman
SANDY BERCKMAN
AD
LAND REGISTRAR FOR THE LAND TITLES DIVISION OF FRONTENAC (No. 13)

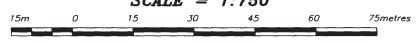
SCHEDULE					
PART	LOT	CON.	INST. No.	PIN No.	AREA
1	Part of			36328-	0.405 Ha.
2	13	4	273350	0058 (R)	0.161 Ha.

PARTS 1 AND 2 COMPRISE PART OF PIN 36328-0058 (R)

PLAN of SURVEY of
Part of LOT 13, CONCESSION 4
Geographic Township of Pittsburgh
CITY OF KINGSTON
COUNTY OF FRONTENAC

SCALE = 1:750

HOPKINS & CORMIER SURVEYING LIMITED
-2008-



BEARING NOTE:
BEARINGS ARE ASTRONOMIC AND ARE DERIVED FROM THE WESTERLY LIMIT OF PART 4, 13R-2429 HAVING A BEARING OF N5°17'20" W AND BEING DESIGNATED HEREON AS "REFERENCE BEARING".

- LEGEND:
- SSIB'S PLANTED DUE TO INSUFFICIENT OVERBURDEN
 - denotes Planted Survey Monument
 - Found Survey Monument
 - SIB Standard Iron Bar
 - SSIB Short Standard Iron Bar
 - IB Iron Bar
 - IRB Iron Bar (round)
 - RB Rock Bar
 - RPL Rock Plug
 - (WT) Witness
 - (M) Measured
 - (R.P.) Registered Plan
 - (HP) Hydro Pole
 - (798) Ray Hunter - O.L.S.
 - (1407) Orange W. Elliott Ltd. - O.L.S.
 - (MTD) Ministry of Transportation - Ontario
 - (1801) Hopkins & Cormier Surveying Ltd. - O.L.S.
 - (00) Origin Unknown

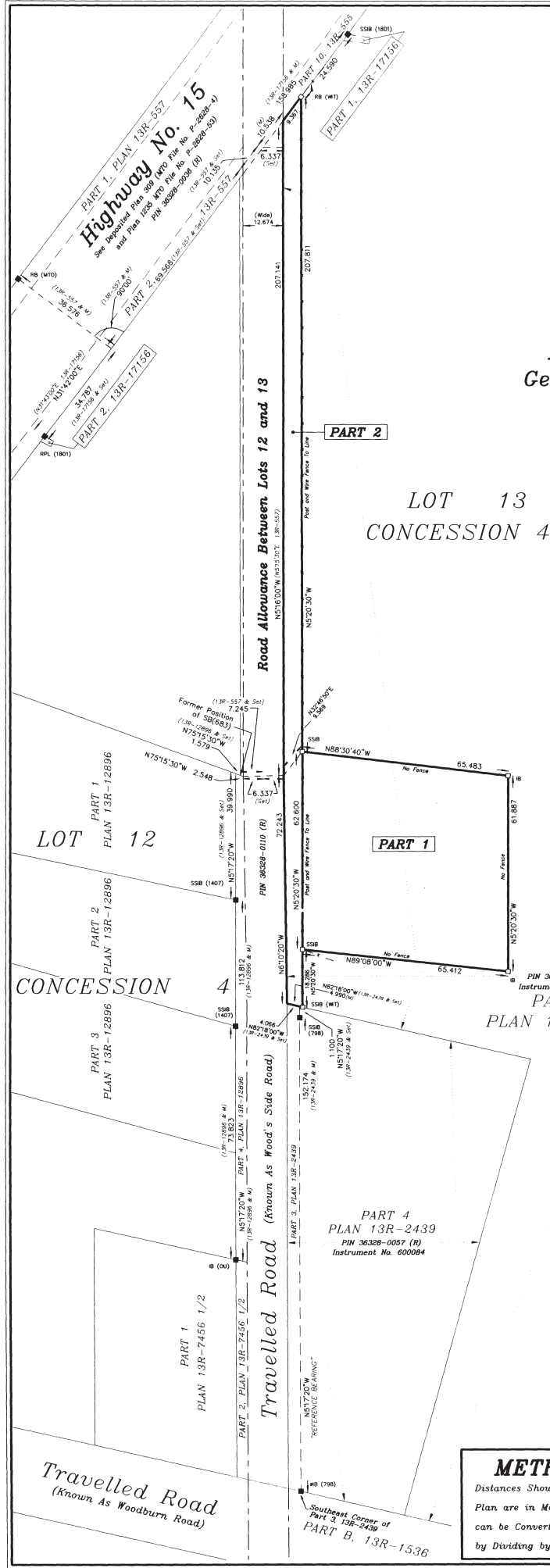
SURVEYOR'S CERTIFICATE:
I CERTIFY THAT:
1. This Survey and Plan are correct and in accordance with the SURVEYS ACT, the SURVEYORS ACT and the REGISTRY ACT and the REGULATIONS made under them.
2. THE SURVEY was completed on the 13th day of June, 2008.

HOPKINS & CORMIER SURVEYING LIMITED
DATE: JUNE 18, 2008
Phil W. Chitty
PHIL W. CHITTY O.L.S.

METRIC
Distances Shown on This Plan are in Metres and can be Converted to Feet by Dividing by 0.3048



Party Chief: TJ	Instrument: BC	Checked By: PFC	Plan By: PFC
HOPKINS & CORMIER SURVEYING LIMITED Ontario & Canada Land Surveyors www.hopkinscormier.com			
634-636 NORRIS COURT KINGSTON, ONTARIO K7P-2R9 Tel: (613) 384-9286 Fax: (613) 384-3513		PROJECT No. 2008-091 LOT 13 CONCESSION 4 TOWNSHIP OF PITTSBURGH	



PART 1, PLAN 13R-557
Highway No. 15
See Deposited Plan 809 (MTO) File No. P-28088-U
and Plan 809 (MTO) File No. P-28088-U
PART 2, PIN 36328-0058 (R)
(10-20-15)

LOT 12
PART 1 PLAN 13R-12896
PART 2 PLAN 13R-12896
CONCESSION 4
PART 3 PLAN 13R-12896

Road Allowance Between Lots 12 and 13

Travelled Road (Known As Wood's Side Road)

Travelled Road (Known As Woodburn Road)

Southeast corner of Part 3, 13R-2439
PART B, 13R-1536